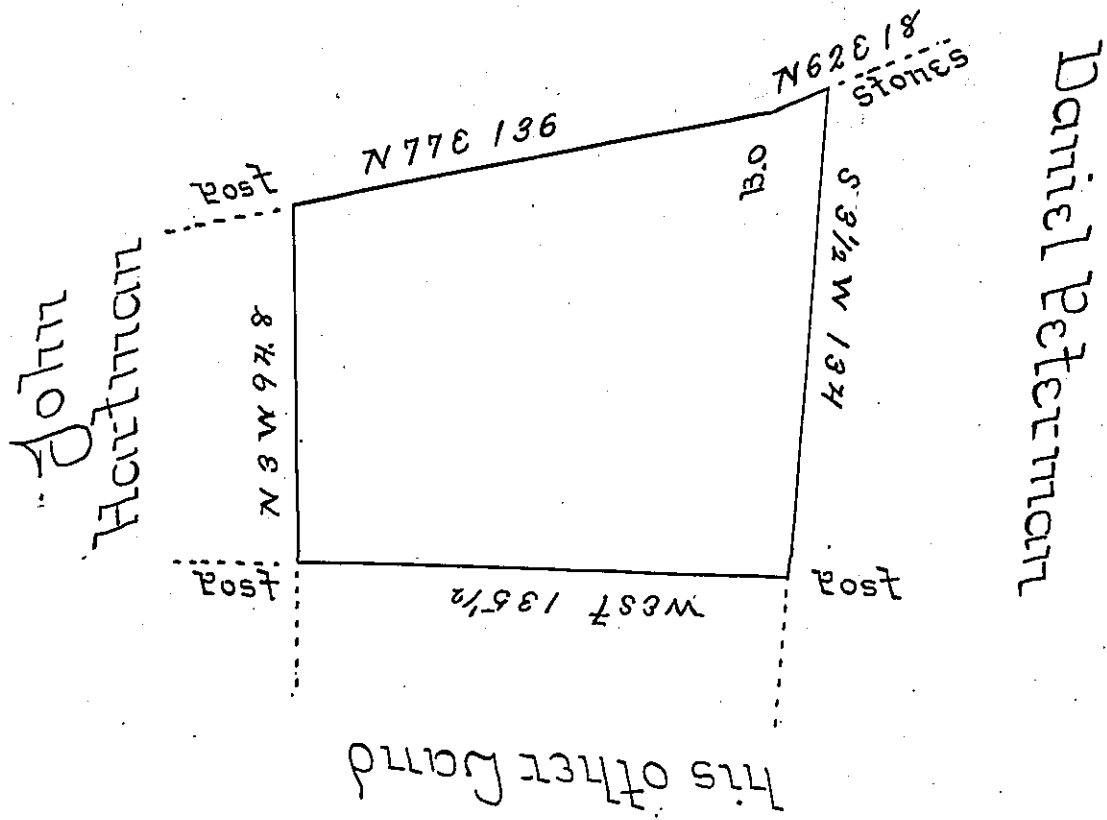


Henry Glatfelter



Henry Engle $95\frac{1}{4}$ ^{pt of 128 1/2 & allowe} and allowance as above dis-
 cribed Situate in Shrewsbury Township York
 County being ^{his} part of a Tract of Land Surveyed
 and Returned by Virtue of a Warrant Dated the
 8th Day of March 1790 laid off at the Request
 of said Henry - the 16th of 3^d mo 1793

Wm Kersey D.S.

To Daniel Brodhead Esq^r

IN TESTIMONY that the above is a copy of the original remaining on file in
 the Department of Internal Affairs of Pennsylvania, made
 conformably to an Act of Assembly approved the 16th day of
 February, 1833, I have hereunto set my Hand and caused
 the Seal of said Department to be affixed at Harrisburg,
 this seventh day of December 1904.

James B. Brown
 Secretary of Internal Affairs.